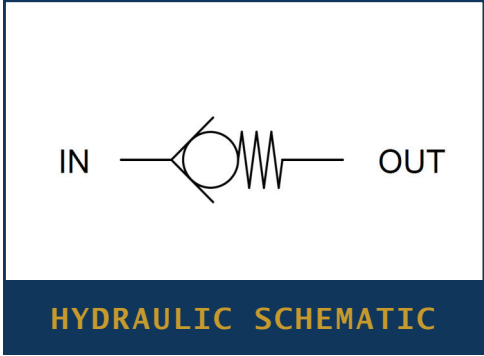
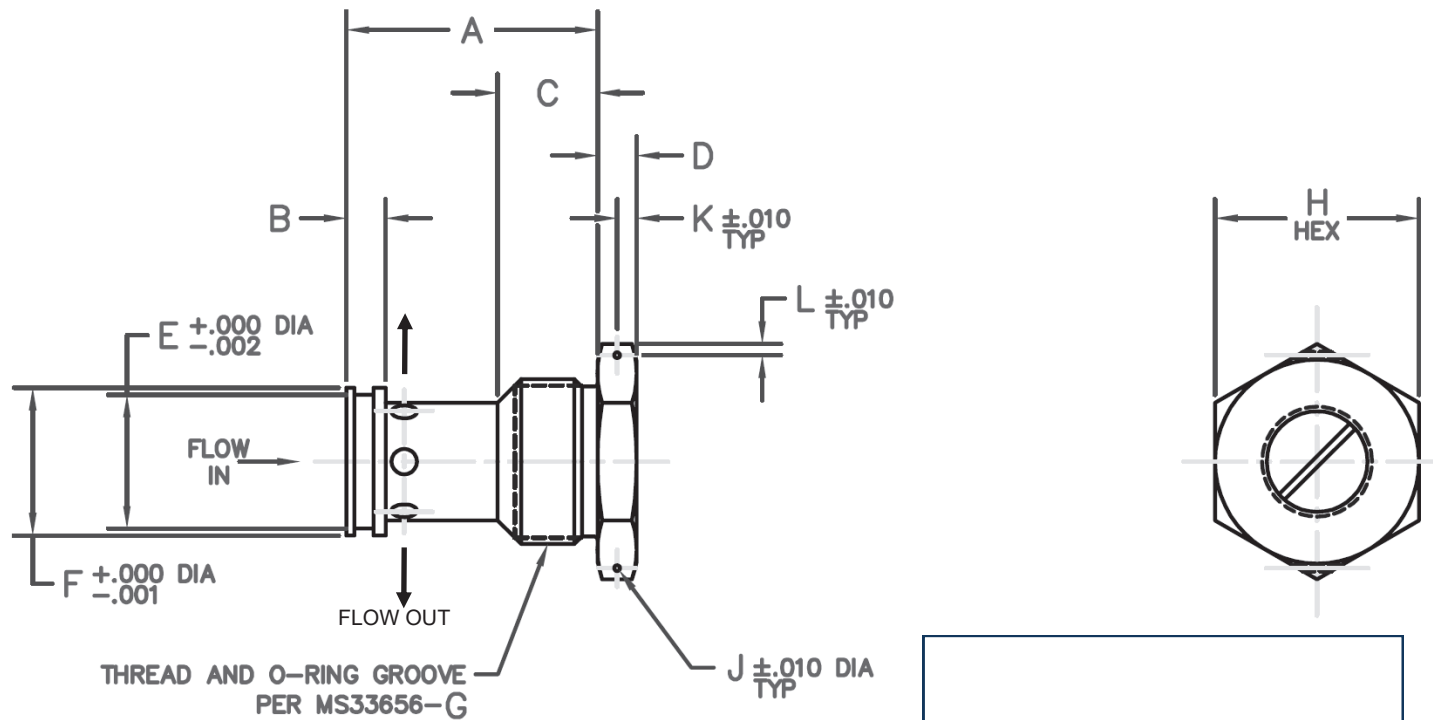




PART NUMBER: 2C6200A CHECK VALVE, SERIES



PERFORMANCE SPECIFICATIONS:

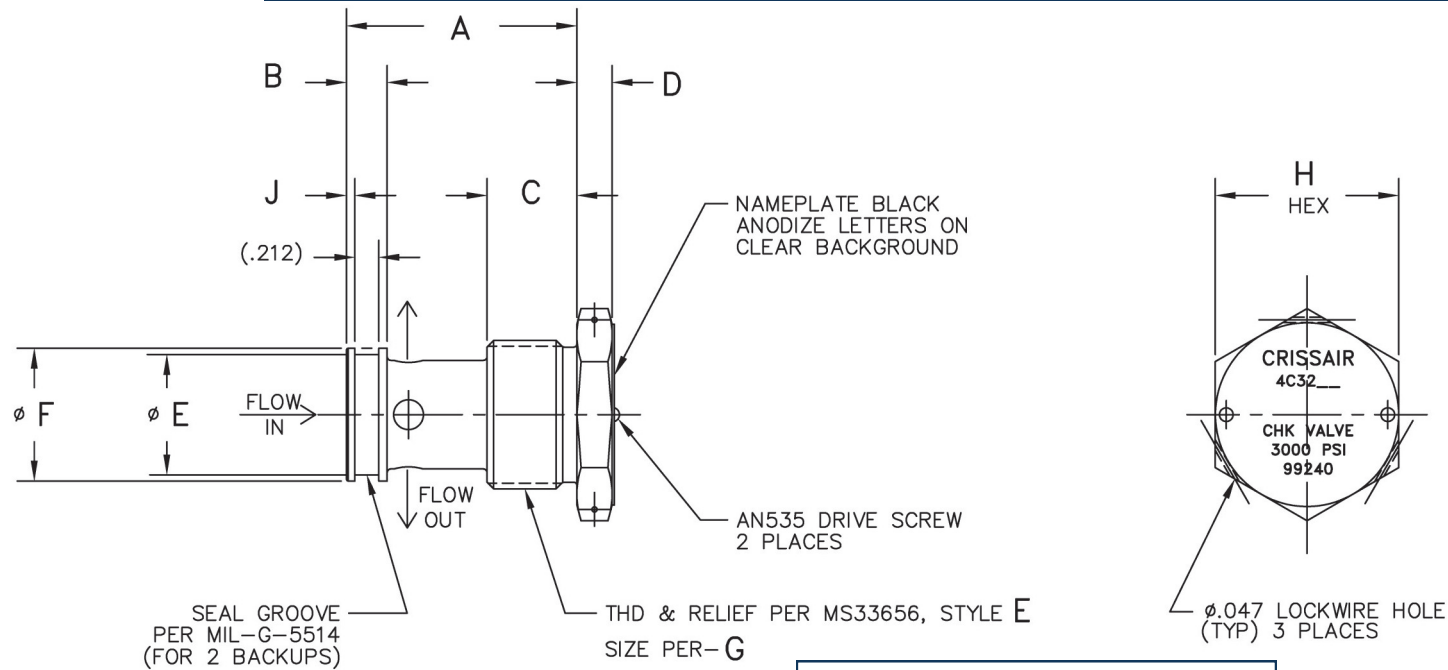
FLUIDS: MIL-H-5606 OR MIL-H-83282
 (PHOSPHATE ESTER / SKYDROL OPTIONS
 AVAILABLE UPON REQUEST)
 MATERIAL: POPPET 440C CRES
 TEMPERATURE RANGE: -65°F TO 275°F
 OPERATING PRESSURE: 3000 PSIG
 PROOF PRESSURE: 4500 PSIG
 CRACKING PRESSURE: 2 TO 8 PSID
 FLOW: SEE TABLE AT 15 PSID MAX
 INTERNAL LEAKAGE (CHECKED DIRECTION):
 1 DPM MAX AT 5 PSID
 NONE AT 1000 - 3000 PSID

2C6216A	2C6236A	16	29.0	2.312	.312	.820	.375	1.381	1.491	20	1.875	.046	.187	.090
2C6212A	2C6232A	12	16.0	2.000	.312	.795	.312	1.068	1.178	16	1.625	.046	.156	.090
2C6210A	2C6230A	10	10.5	1.750	.290	.680	.312	.813	.923	12	1.375	.046	.156	.090
2C6208A	2C6228A	8	6.0	1.625	.280	.575	.250	.626	.736	10	1.125	.046	.125	.090
2C6206A	2C6226A	6	3.5	1.468	.270	.575	.219	.501	.611	8	1.000	.046	.109	.090
2C6204A	2C6224A	4	1.2	1.188	.250	.490	.188	.373	.483	6	.812	.046	.094	.090
BODY 2024-T4 AL PART NO	BODY 303 CRES PART NO	SIZE	RATED FLOW (GPM)	A	B	C	D	E	F	G	H	J	K	L

CATEGORY 1: CHECK VALVES, CARTRIDGE



PART NUMBER: 4C3200 CHECK VALVE, SERIES



PERFORMANCE SPECIFICATIONS:

FLUIDS: MIL-H-5606 OR MIL-H-83282
(PHOSPHATE ESTER / SKYDROL OPTIONS
AVAILABLE UPON REQUEST)

MATERIAL: BODY 2024-T351 AL
POPPET 440C CRES

TEMPERATURE RANGE: -65°F TO 275°F

OPERATING PRESSURE: 3000 PSIG

PROOF PRESSURE: 4500 PSIG

CRACKING PRESSURE: 2 TO 8 PSID

FLOW: SEE TABLE AT 15 PSID MAX

INTERNAL LEAKAGE (CHECKED DIRECTION):
NONE AT 3000 PSID



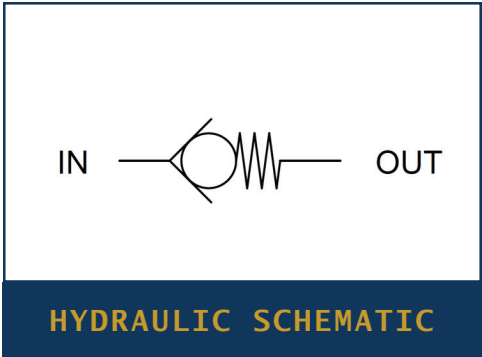
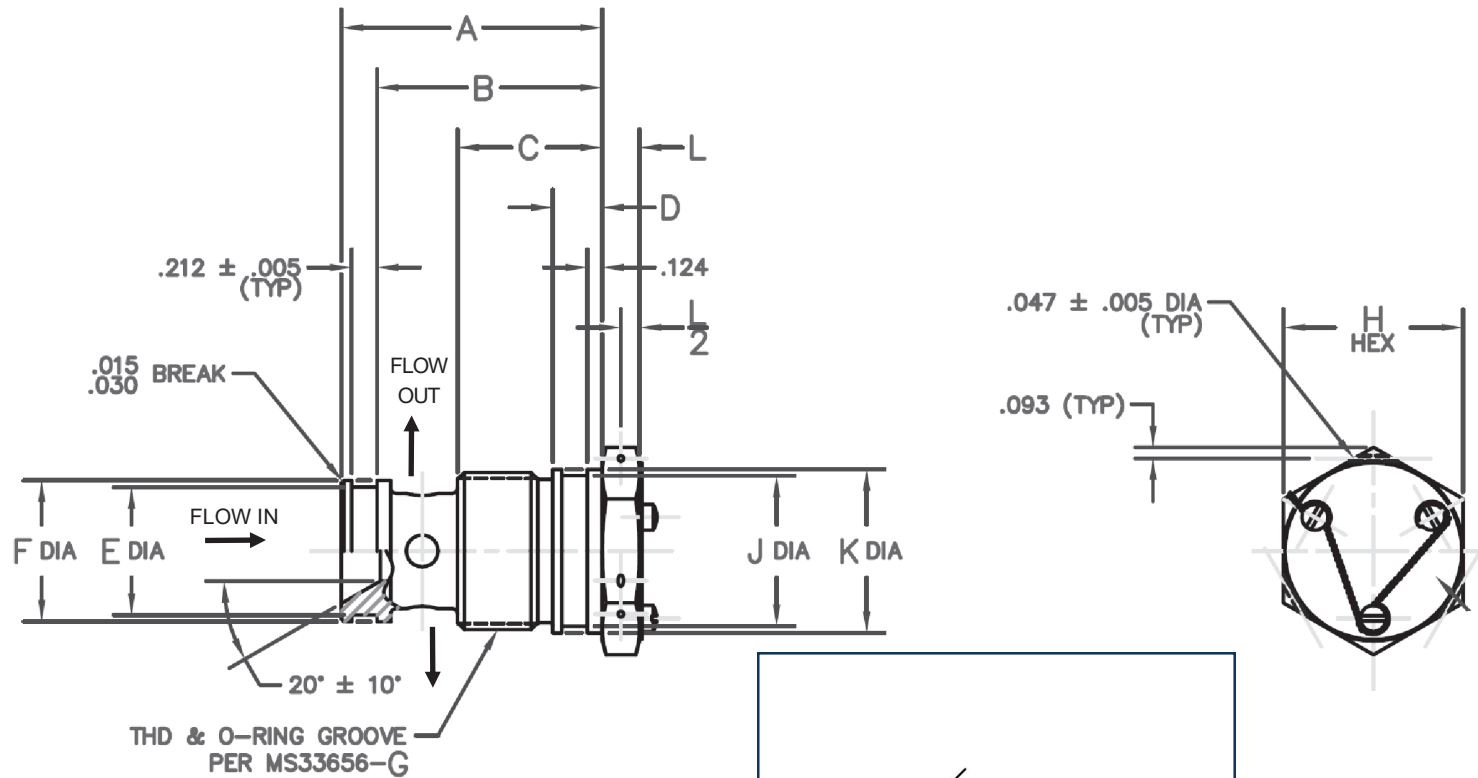
HYDRAULIC SCHEMATIC

4C3216	16	2.370	.370	.820	.375	1.379	1.489	20	1.875	.080	29.0	.417
4C3212	12	2.040	.360	.795	.312	1.066	1.178	16	1.625	.075	16.0	.263
4C3210	10	1.750	.350	.680	.312	.813	.923	12	1.375	.070	10.5	.167
4C3208	8	1.700	.350	.575	.250	.626	.736	10	1.125	.070	6.0	.107
4C3206	6	1.440	.340	.575	.219	.501	.611	8	1.000	.065	3.5	.072
4C3204	4	1.250	.320	.490	.188	.373	.483	6	.812	.055	1.2	.040
CRISSAIR PART NO	DASH NO	A	B	C	D	E +.000 -.002	F +.000 -.001	G	H HEX	J	RATED FLOW (GPM)	MAX WT LBS

CATEGORY 1: CHECK VALVES, CARTRIDGE



PART NUMBER: 2C9180 CHECK VALVE, SERIES



PERFORMANCE SPECIFICATIONS:

FLUIDS: PHOSPHATE ESTER / SKYDROL (MIL-H-5606 OR MIL-H-83282 OPTIONS AVAILABLE UPON REQUEST)
 MATERIAL: BODY 2024-T351 AL
 POPPET 440C CRES
 TEMPERATURE RANGE: -65°F TO 225°F
 OPERATING PRESSURE: 3000 PSIG
 PROOF PRESSURE: 4500 PSIG
 CRACKING PRESSURE: 2 TO 8 PSID
 FLOW: SEE TABLE
 INTERNAL LEAKAGE (CHECKED DIRECTION):
 1 DPM MAX AT 5 PSID
 NONE AT 1000 TO 3000 PSID

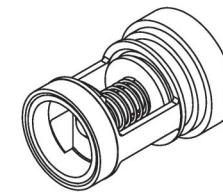
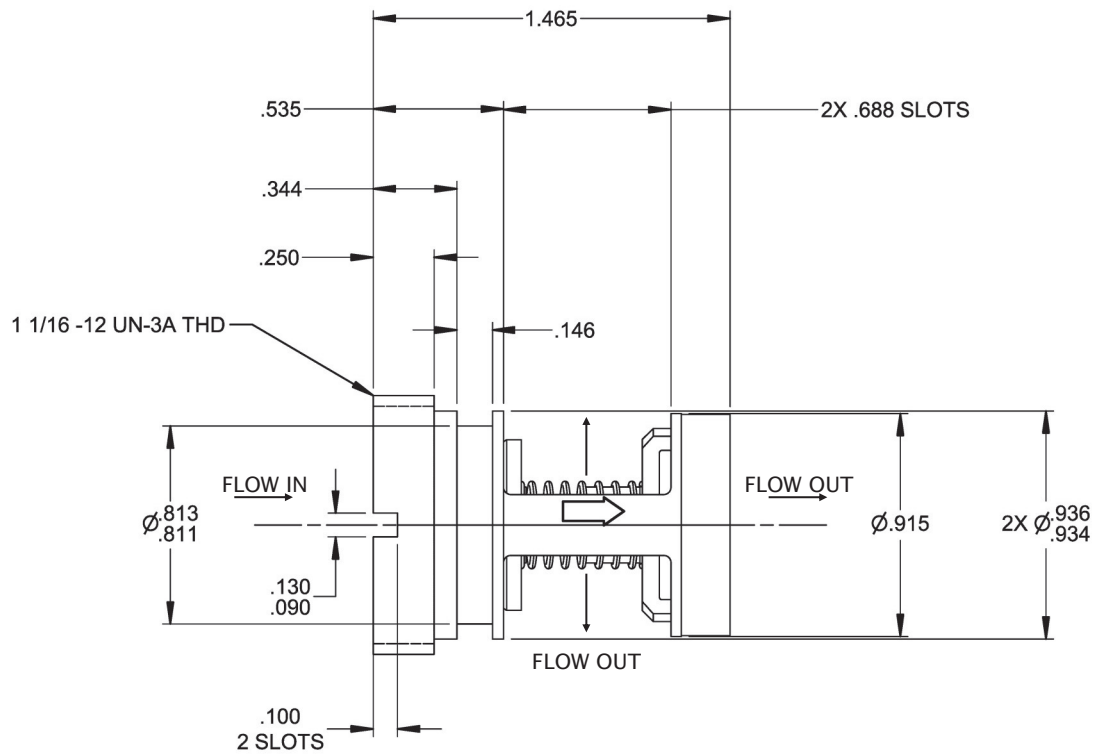
HYDRAULIC SCHEMATIC

2C9196	.380	16	29.0	15	2.430	2.121	1.300	.411	1.068	1.178	16	1.625	1.381	1.491	.380
2C9192	.270	12	16.0	15	2.170	1.883	1.206	.411	1.068	1.178	16	1.500	1.256	1.366	.312
2C9190	.170	10	10.5	15	1.925	1.644	1.080	.400	.813	.923	12	1.250	1.006	1.116	.312
2C9188	.110	8	6.0	15	1.685	1.404	.970	.395	.626	.736	10	1.125	.813	.923	.250
2C9186	.076	6	3.5	25	1.600	1.324	.965	.390	.501	.611	8	1.000	.688	.798	.219
2C9184	.043	4	1.2	15	1.440	1.164	.870	.380	.373	.483	6	.750	.501	.611	.188
CRISSAIR PART NO	MAX WT (LBS)	SIZE	RATED FLOW (GPM)	MAX ΔP PSID	A ±.010	B ±.010	C	D ±.005	E +.000 -0.002	F +.000 -0.001	G	H	J +.000 -0.002	K +.000 -0.001	L

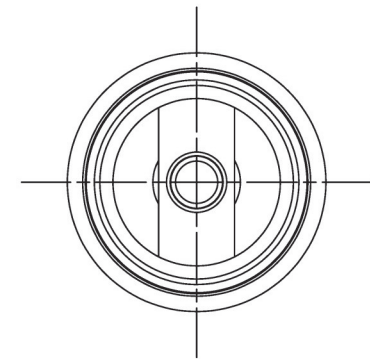
CATEGORY 1: CHECK VALVES, CARTRIDGE



PART NUMBER: 1C6064 CHECK VALVE



ISOMETRIC VIEW
FOR REFERENCE ONLY



PERFORMANCE SPECIFICATIONS:

FLUIDS: ALL AIRCRAFT HYDRAULIC FLUIDS

MATERIAL: BODY 303 CRES

POPPET 440C CRES

TEMPERATURE RANGE: -65°F TO +275°F

OPERATING PRESSURE: 3000 PSIG

PROOF PRESSURE: 4500 PSIG

CRACKING PRESSURE: 2 TO 8 PSID

FLOW: 32 GPM AT 10 PSID MAX

INTERNAL LEAKAGE (CHECKED DIRECTION):

1 DPM MAX AT 5 PSID

NONE AT 1000 TO 3000 PSID

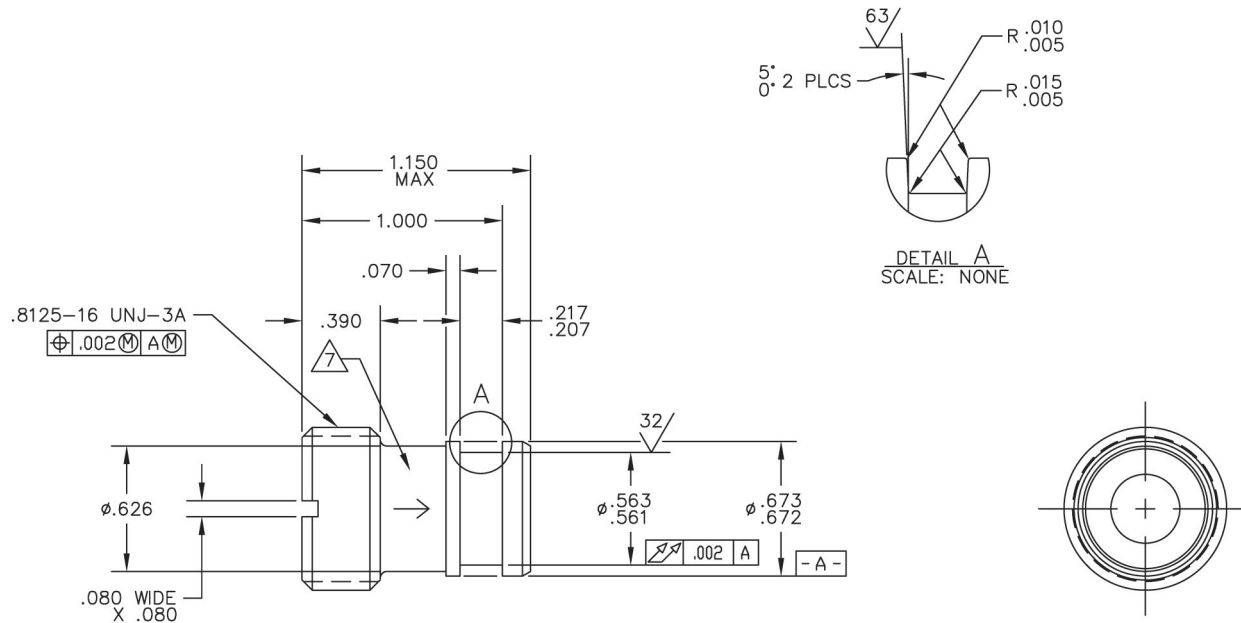


HYDRAULIC SCHEMATIC

CATEGORY 1: CHECK VALVES, CARTRIDGE

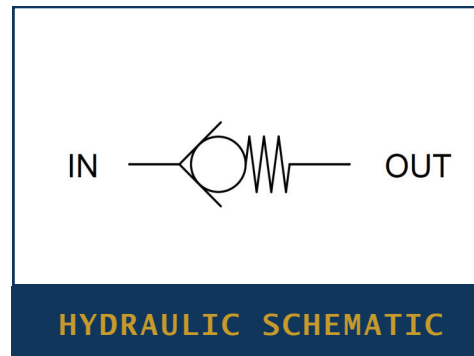


PART NUMBER: 1C4168 CHECK VALVE



PERFORMANCE SPECIFICATIONS:

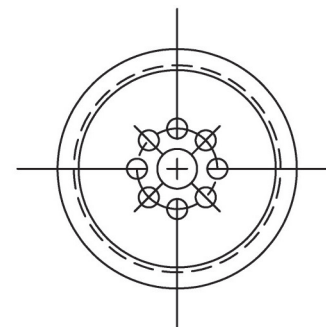
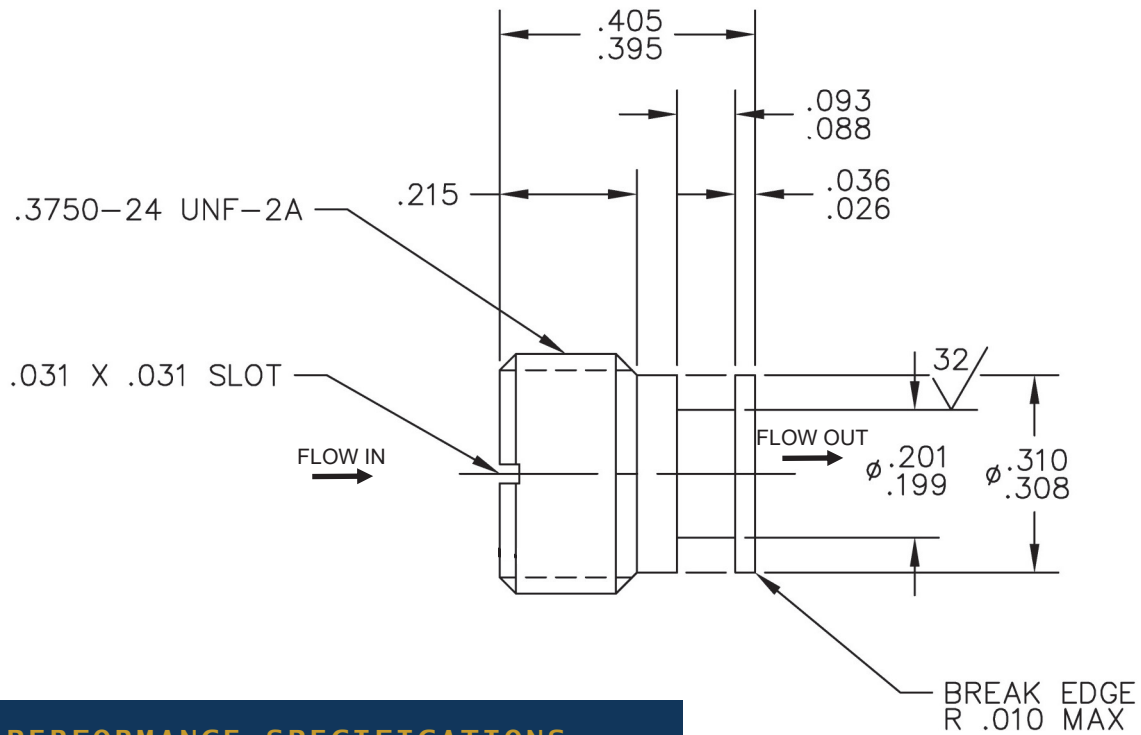
FLUIDS: ALL AIRCRAFT HYDRAULIC FLUIDS
MATERIAL: BODY 303 CRES
 POPPET 440C CRES
TEMPERATURE RANGE: -65°F TO 275°F (FLUID)
 -65°F TO 180°F (AMBIENT)
OPERATING PRESSURE: 3000 PSIG
PROOF PRESSURE: 4500 PSIG
CRACKING PRESSURE: 2 TO 5 PSID
FLOW: 5 GPM AT 7 PSID MAX
RESEAT: 1.0 PSID MIN
INTERNAL LEAKAGE (CHECKED DIRECTION):
 1 CC/MIN MAX AT 5 PSID
WEIGHT: .08 LBS MAX



CATEGORY 1: CHECK VALVES, CARTRIDGE



PART NUMBER: 3C4342 CHECK VALVE



PERFORMANCE SPECIFICATIONS:

FLUIDS: ALL AIRCRAFT HYDRAULIC FLUIDS

MATERIAL: BODY 17-4PH CRES

POPPET 17-4PH CRES

ELASTOMER NITRILE

TEMPERATURE RANGE: -65°F TO 275°F (FLUID NON-OPERATING)

20°F TO 170°F (FLUID OPERATING)

-40°F TO 203°F (AMBIENT)

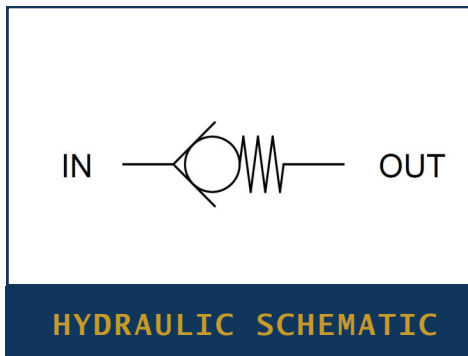
OPERATING PRESSURE: 3000 PSIG

PROOF PRESSURE: 4500 PSIG

CRACKING PRESSURE: 25 PSID MAX

FLOW: .5 GPM AT 21 PSID MAX AT 100°± 20°F

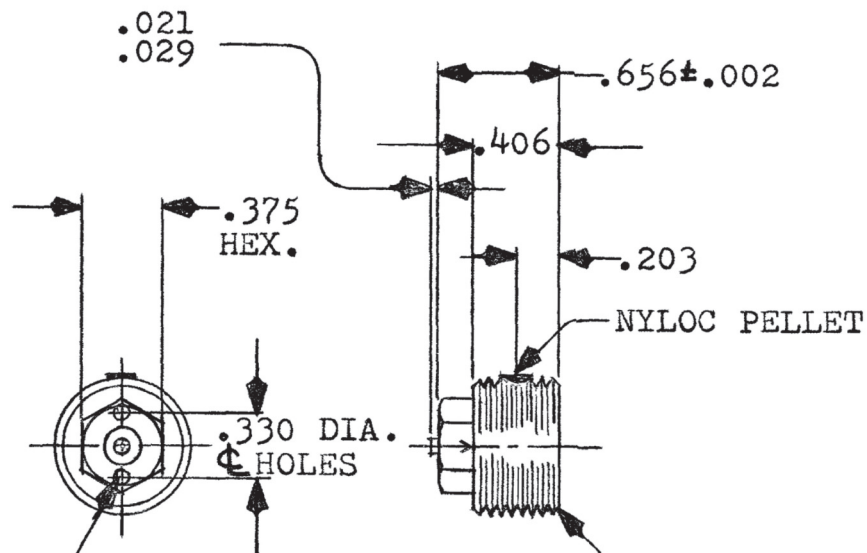
INTERNAL LEAKAGE (CHECKED DIRECTION): NONE



CATEGORY 1: CHECK VALVES, CARTRIDGE



PART NUMBER: 2C5726 CHECK VALVE



THREAD 9/16-24 NEF-3A
PER MIL-S-7742

STAMP FLOW ARROWS 180° APART

.045±.002 DIA. x .050 DEPTH
2 HOLES 180° APART

PERFORMANCE SPECIFICATIONS:

FLUIDS: ALL AIRCRAFT HYDRAULIC FLUIDS
MATERIAL: BODY 303 CRES
POPPET 440C CRES
TEMPERATURE RANGE: -65°F TO 275°F
OPERATING PRESSURE: 3000 PSIG
PROOF PRESSURE: 4500 PSIG
CRACKING PRESSURE: 2 TO 8 PSID MAX
FLOW: .5 GPM AT 15 PSID MAX
INTERNAL LEAKAGE (CHECKED DIRECTION):
NONE AT 3000 PSID
WEIGHT: .033 LBS MAX

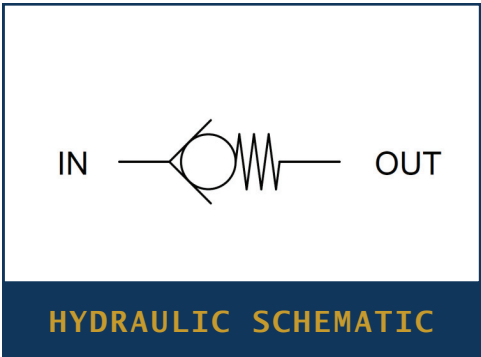
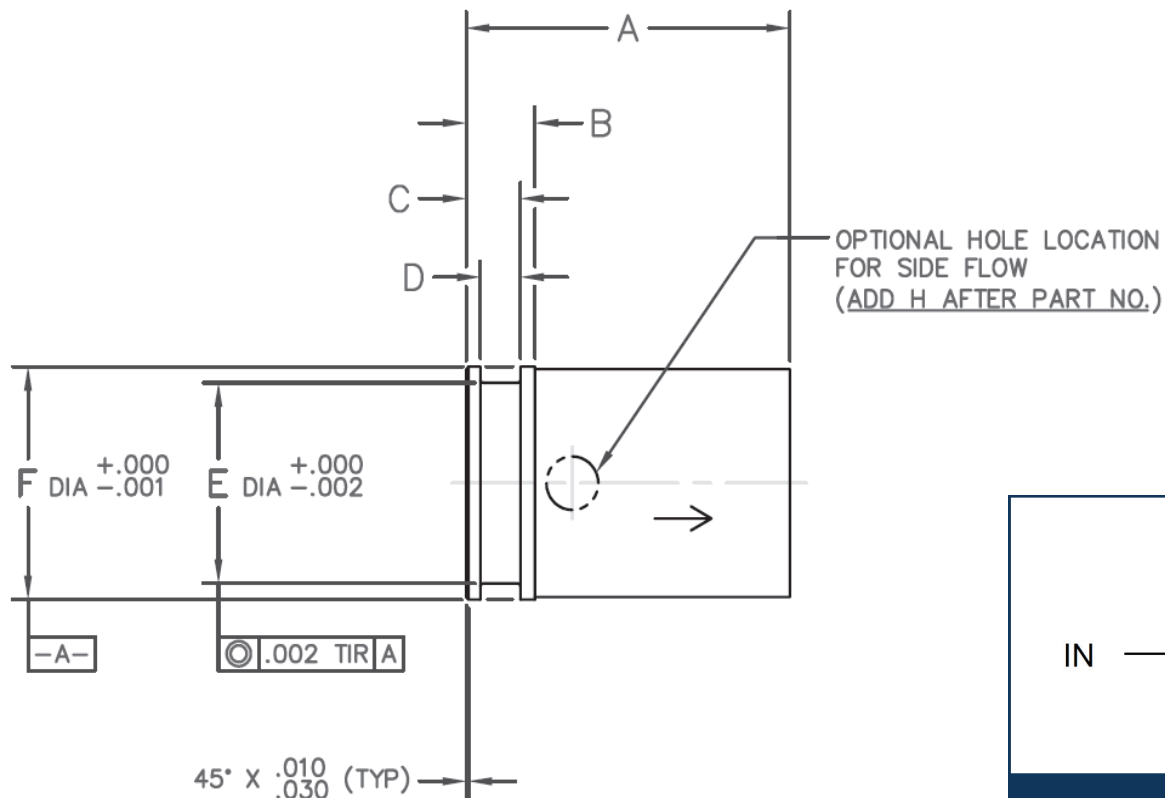


HYDRAULIC SCHEMATIC

CATEGORY 1: CHECK VALVES, CARTRIDGE



PART NUMBER: CDS1000-CHECK VALVE



PERFORMANCE SPECIFICATIONS:

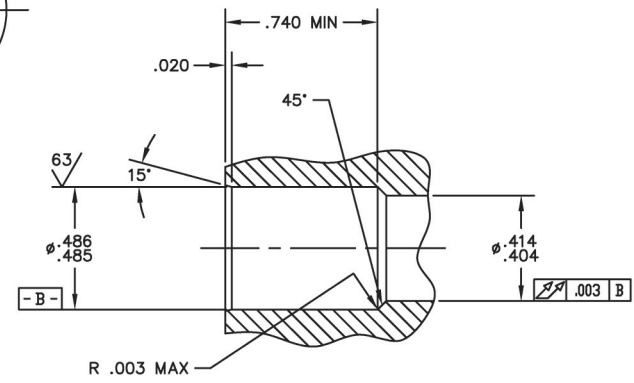
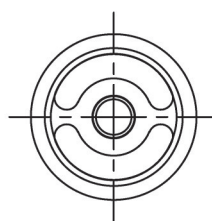
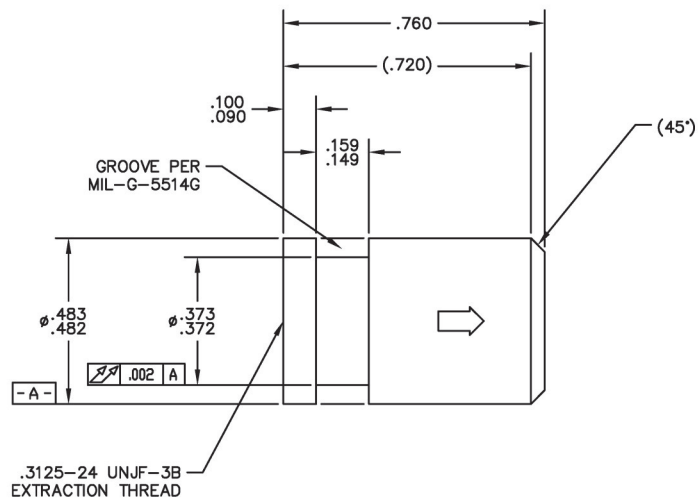
FLUIDS: ALL AIRCRAFT HYDRAULIC FLUIDS
 MATERIAL: POPPET 440C CRES
 TEMPERATURE RANGE: -65°F TO 450°F
 OPERATING PRESSURE: 3000 PSIG
 PROOF PRESSURE: 4500 PSIG
 CRACKING PRESSURE: 2 TO 8 PSID
 FLOW: SEE TABLE AT 15 PSID MAX ΔP
 INTERNAL LEAKAGE (CHECKED DIRECTION):
 1 DPM MAX AT 5 PSID
 NONE AT 1000 TO 3000 PSID

2C9334	2C9960	24	2.500	.620	.420	.309	1.498	1.738	70.0
2C9354	2C9958	20	2.480	.560	.350	.250	1.315	1.491	50.0
2C9352	2C9696	16	1.850	.500	.350	.250	1.003	1.179	29.0
2C9952	2C9692	12	1.500	.420	.335	.250	.817	.989	16.0
2C9950	2C9690	10	1.452	.404	.290	.212	.688	.798	10.5
2C9948	2C9688	8	1.174	.404	.290	.212	.563	.673	6.0
2C9946	2C9686	6	1.075	.404	.290	.212	.373	.483	3.5
2C9954	2C9694	5	1.000	.404	.290	.212	.373	.483	2.3
2C9944	2C9684	4	.900	.404	.290	.212	.248	.358	1.2
BODY 303 CRES PART NO	BODY 2024-T351 AL PART NO	SIZE	A ±.015	B MAX	C ±.010	D ±.005	E DIA	F DIA	RATED FLOW (GPM)

CATEGORY 1: CHECK VALVES, CARTRIDGE



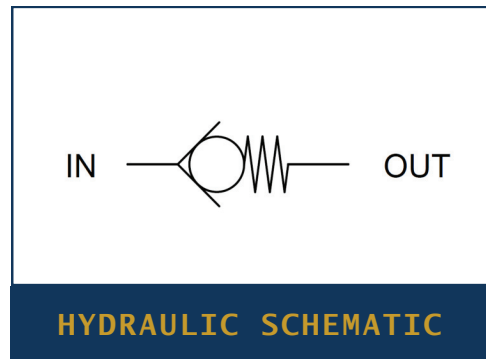
PART NUMBER: 1C4418 CHECK VALVE



INSTALLATION CAVITY
SCALE: NONE

PERFORMANCE SPECIFICATIONS:

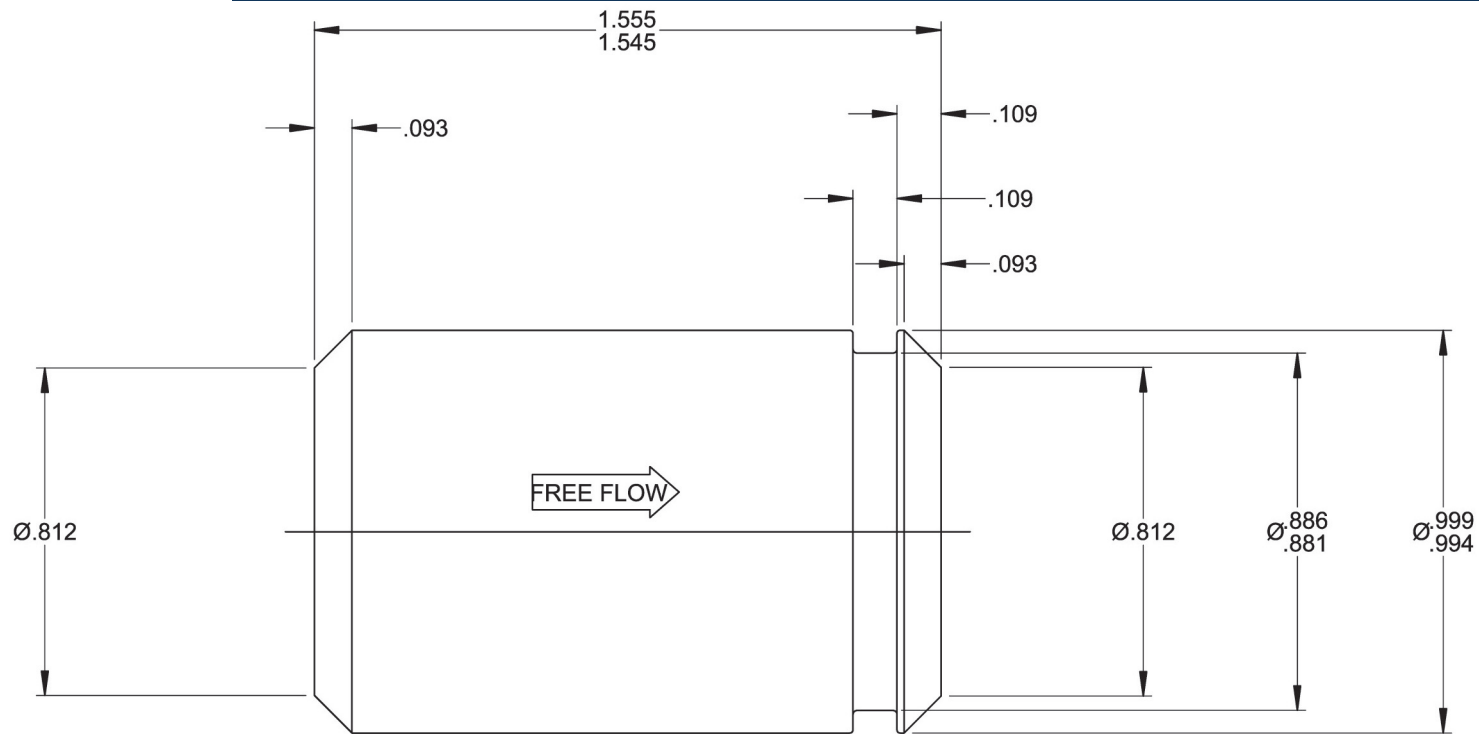
FLUIDS: ALL AIRCRAFT HYDRAULIC FLUIDS
MATERIAL: BODY 15-5PH CRES
POPPET 440C CRES
TEMPERATURE RANGE: -65°F TO 275°F
OPERATING PRESSURE: 4000 PSIG
PROOF PRESSURE: 6000 PSIG
CRACKING PRESSURE: 2 TO 8 PSID
FLOW: 4.00 GPM AT 15 PSID MAX USING MIL-H-83282 AT 80°F
INTERNAL LEAKAGE (CHECKED DIRECTION):
1 DPM MAX AT 5 PSID
NONE AT 1000 TO 4000 PSID
WEIGHT: .02 LBS MAX



CATEGORY 1: CHECK VALVES, CARTRIDGE

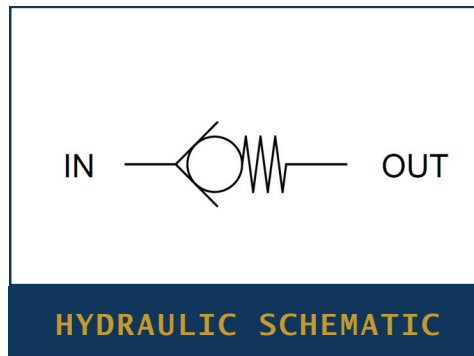


PART NUMBER: 1C1382 CHECK VALVE



PERFORMANCE SPECIFICATIONS:

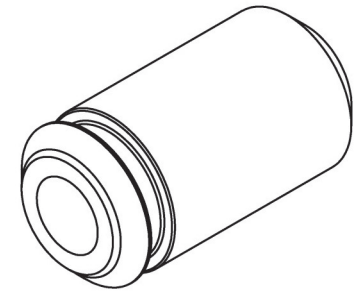
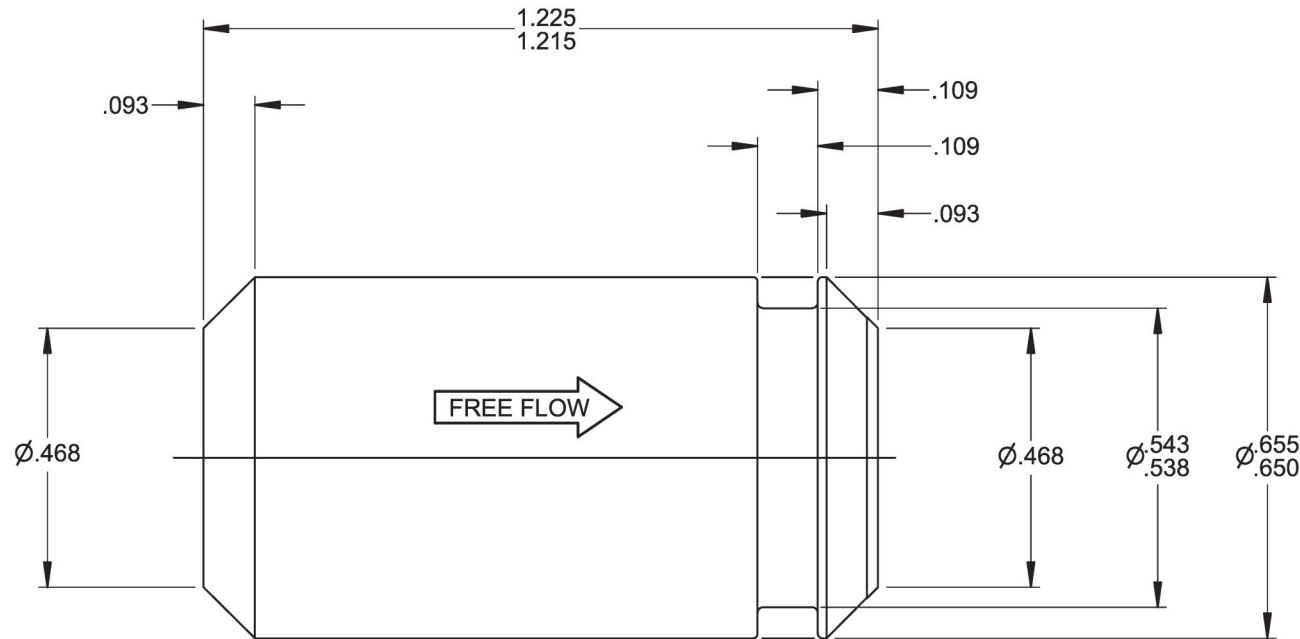
FLUIDS: ALL AIRCRAFT HYDRAULIC FLUIDS
MATERIAL: BODY 303 CRES
 POPPET 440C CRES
TEMPERATURE RANGE: +40°F TO 160°F
OPERATING PRESSURE: 3000 PSIG
PROOF PRESSURE: 5000 PSIG
CRACKING PRESSURE: 1 TO 2 PSID
FLOW: 16 GPM AT 15 PSID MAX
INTERNAL LEAKAGE (CHECKED DIRECTION):
 2 DPM MAX AT 5 PSID
 NONE AT 1000 TO 3000 PSID



CATEGORY 1: CHECK VALVES, CARTRIDGE



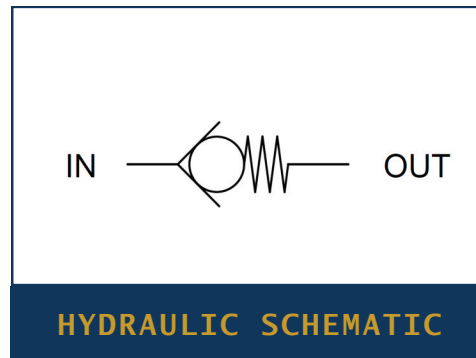
PART NUMBER: 1C1376 CHECK VALVE



ISOMETRIC VIEW
FOR REFERENCE ONLY

PERFORMANCE SPECIFICATIONS:

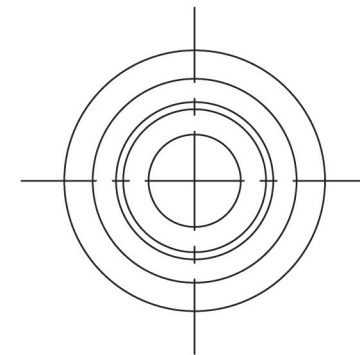
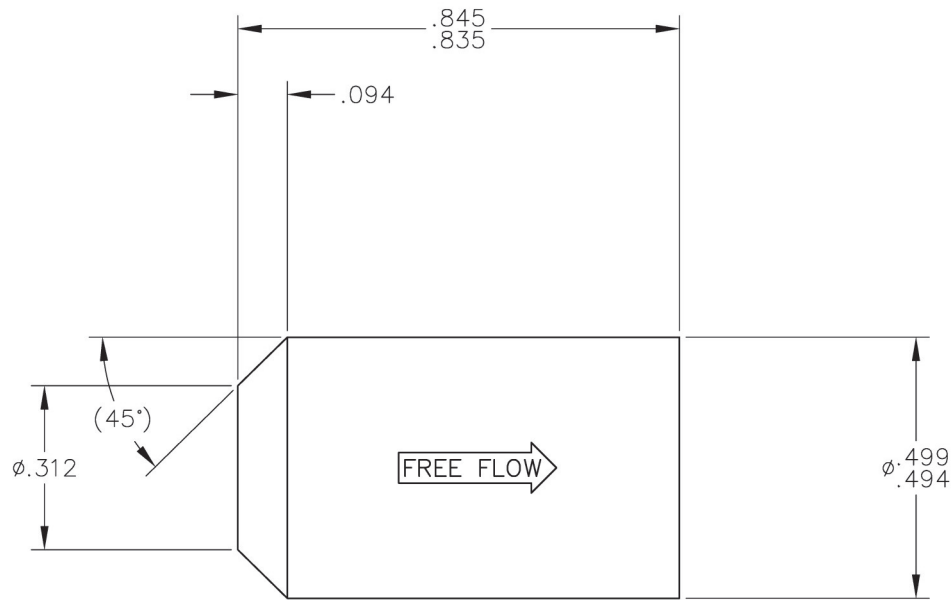
FLUIDS: ALL AIRCRAFT HYDRAULIC FLUIDS
MATERIAL: BODY 303 CRES
 POPPET 440C CRES
TEMPERATURE RANGE: +40°F TO 160°F
OPERATING PRESSURE: 3000 PSIG
PROOF PRESSURE: 5000 PSIG
CRACKING PRESSURE: 1 TO 2 PSID
FLOW: 5 GPM AT 15 PSID MAX
INTERNAL LEAKAGE (CHECKED DIRECTION):
 2 DPM MAX AT 5 PSID
 NONE AT 1000 TO 3000 PSID



CATEGORY 1: CHECK VALVES, CARTRIDGE



PART NUMBER: 1C4792 CHECK VALVE



PERFORMANCE SPECIFICATIONS:

FLUIDS: ALL AIRCRAFT HYDRAULIC FLUIDS

MATERIAL: BODY 303 CRES

POPPET 440C CRES

TEMPERATURE RANGE: 40°F TO 300°F

OPERATING PRESSURE: 3000 PSIG

PROOF PRESSURE: 5000 PSIG

CRACKING PRESSURE: 4 TO 5 PSID

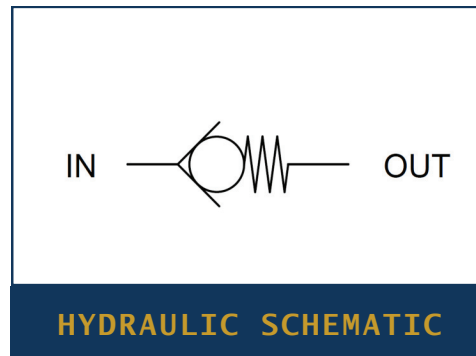
FLOW: 2.5 GPM AT 15 PSID MAX

INTERNAL LEAKAGE (CHECKED DIRECTION):

2 DPM MAX AT 5 PSID

NONE AT 1000, 1500 AND 3000 PSID

WEIGHT: .03 LBS MAX

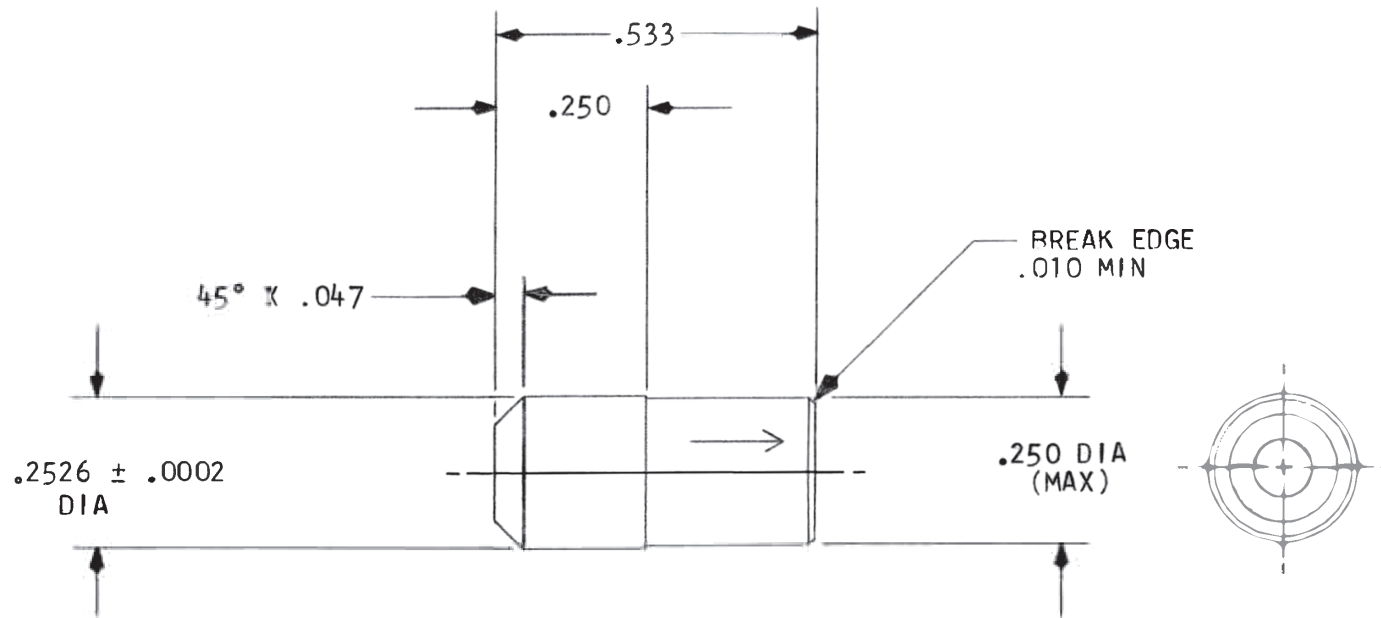


HYDRAULIC SCHEMATIC

CATEGORY 1: CHECK VALVES, CARTRIDGE

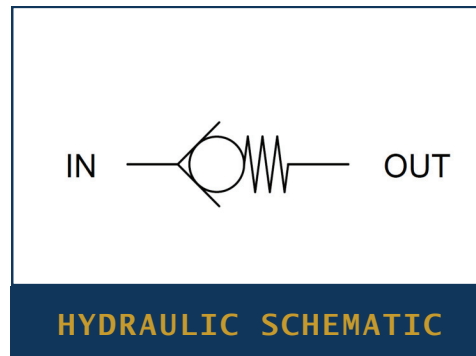


PART NUMBER: 2C5654 CHECK VALVE



PERFORMANCE SPECIFICATIONS:

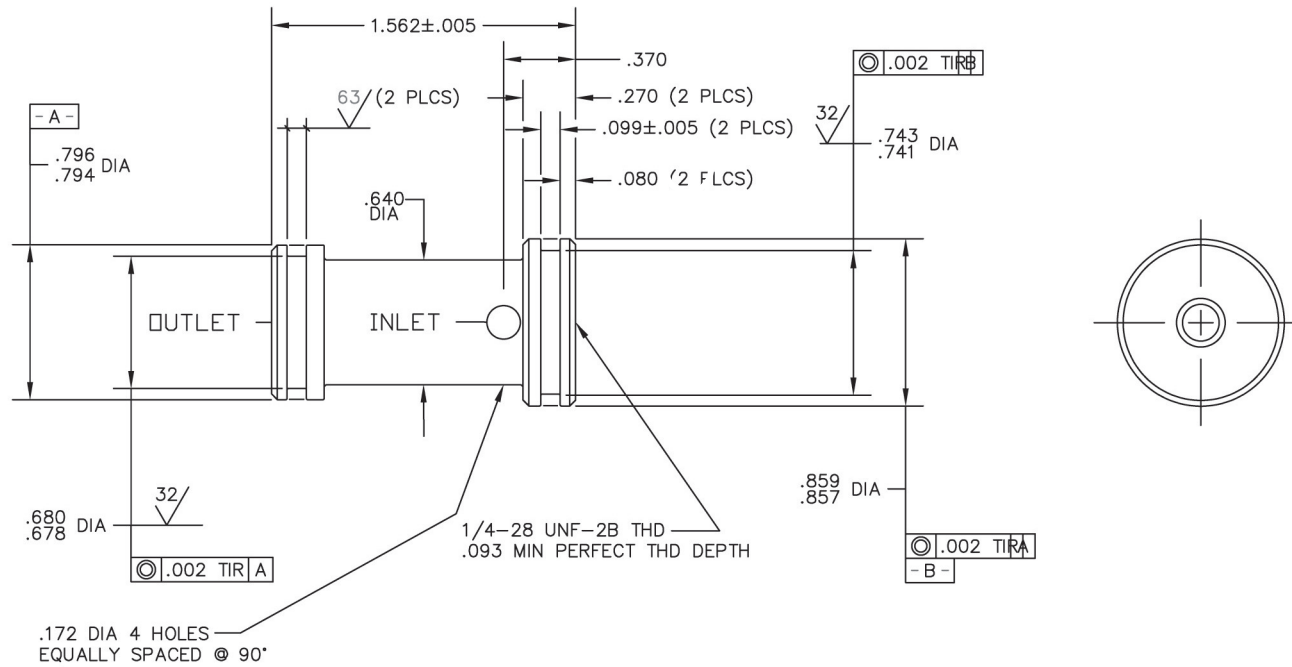
FLUIDS: ALL AIRCRAFT HYDRAULIC FLUIDS
MATERIAL: BODY 303 CRES
POPPET 440C CRES
TEMPERATURE RANGE: -65°F TO 225°F
OPERATING PRESSURE: 3000 PSIG
PROOF PRESSURE: 4500 PSIG
CRACKING PRESSURE: 2 TO 5 PSID
FLOW: .8 GPM AT 15 PSID MAX
INTERNAL LEAKAGE (CHECKED DIRECTION):
1 DPM MAX AT 5 PSID
NONE AT 1000 TO 3000 PSID
WEIGHT: .0036 LBS MAX



CATEGORY 1: CHECK VALVES, CARTRIDGE



PART NUMBER: 3C4108 CHECK VALVE



PERFORMANCE SPECIFICATIONS:

FLUIDS: MIL-H-5606 OR MIL-H-83282 (PHOSPHATE ESTER & SKYDROL OPTIONS AVAILABLE UPON REQUEST)

MATERIAL: BODY 6061-T651 AL
POPPET 17-4PH CRES
ELASTOMER FLUOROCARBON

TEMPERATURE RANGE: -65°F TO 300°F

OPERATING PRESSURE: 125 PSIG

PROOF PRESSURE: 225 PSIG

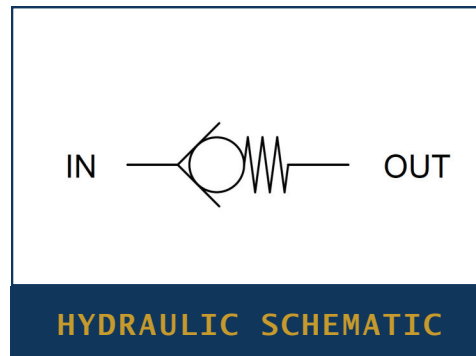
CRACKING PRESSURE: 2 TO 4 PSID

FLOW: 2.0 GPM AT 5 PSID MAX AT 176°F

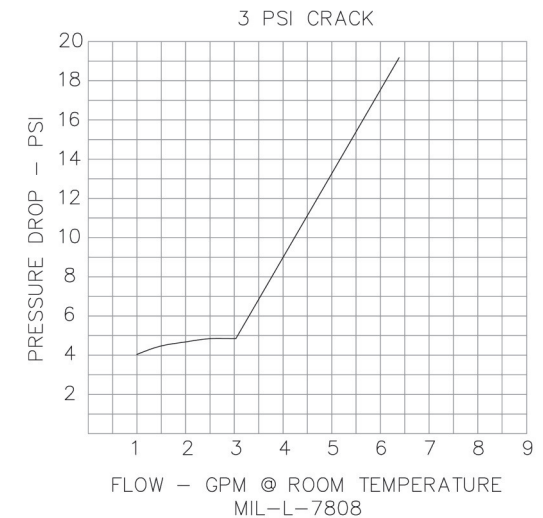
INTERNAL LEAKAGE (CHECKED DIRECTION):

NONE TO 300 PSID

WEIGHT: .065 LBS MAX



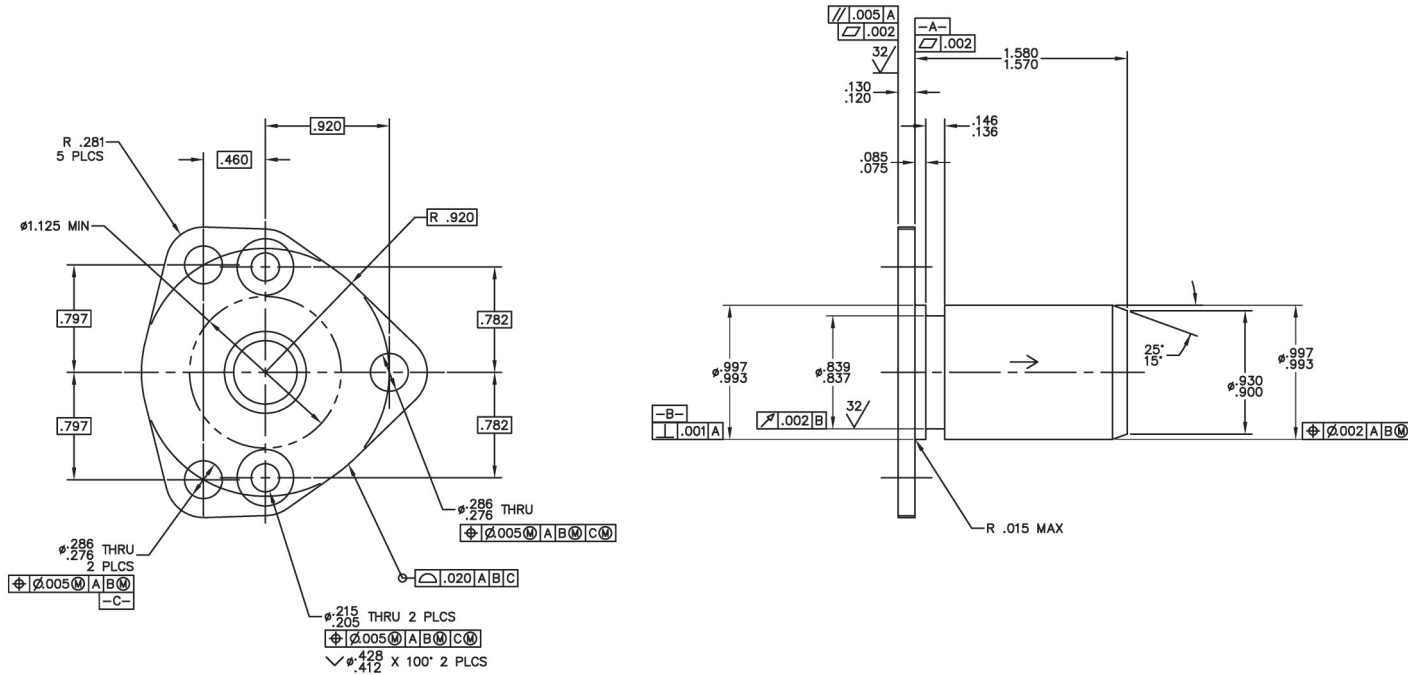
HYDRAULIC SCHEMATIC



CATEGORY 1: CHECK VALVES, CARTRIDGE



PART NUMBER: 3C4628 CHECK VALVE



PERFORMANCE SPECIFICATIONS:

FLUIDS: MIL-H-5606 OR MIL-H-83282
(PHOSPHATE ESTER / SKYDROL OPTIONS
AVAILABLE UPON REQUEST)

MATERIAL: BODY 15-5PH CRES
POPPET 303 CRES
ELASTOMER FLUOROCARBON

TEMPERATURE RANGE: -40°F TO 350°F

OPERATING PRESSURE: 100 PSIG

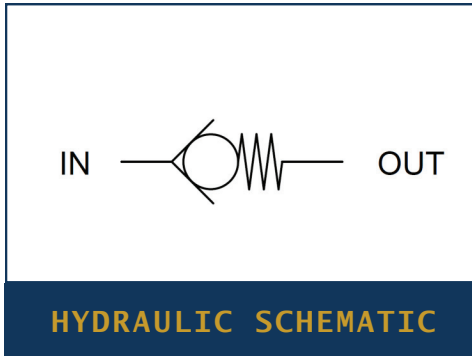
PROOF PRESSURE: 200 PSIG

CRACKING PRESSURE: 2 TO 8 PSID

FLOW: 12.0 GPM AT 15 PSID MAX

INTERNAL LEAKAGE (CHECKED DIRECTION):
NONE AT 0 TO 300 PSID

WEIGHT: .32 LBS MAX



CATEGORY 1: CHECK VALVES, CARTRIDGE



CRISSAIR HAS HUNDREDS OF OTHER CHECK VALVES NOT LISTED IN THE CATALOG WITH DIFFERENT MATERIALS, FITTINGS, AND SIZE CONFIGURATIONS.

CONTACT CRISSAIR FOR ADDITIONAL INFORMATION/DRAWINGS AT

(661) 367-3300 OR SALES@CRISSAIR.COM.

YOU CAN ALSO VISIT WWW.CRISSAIR.COM.